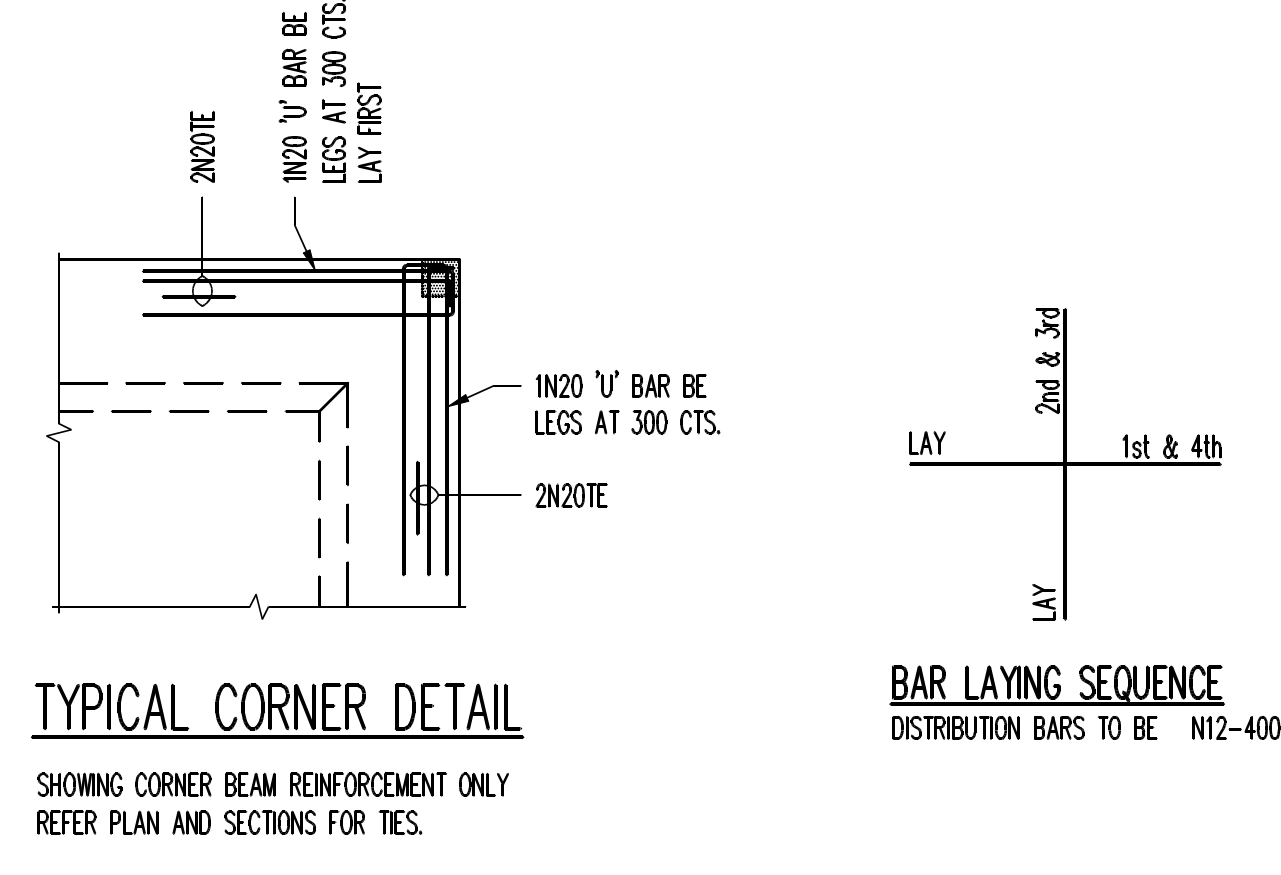
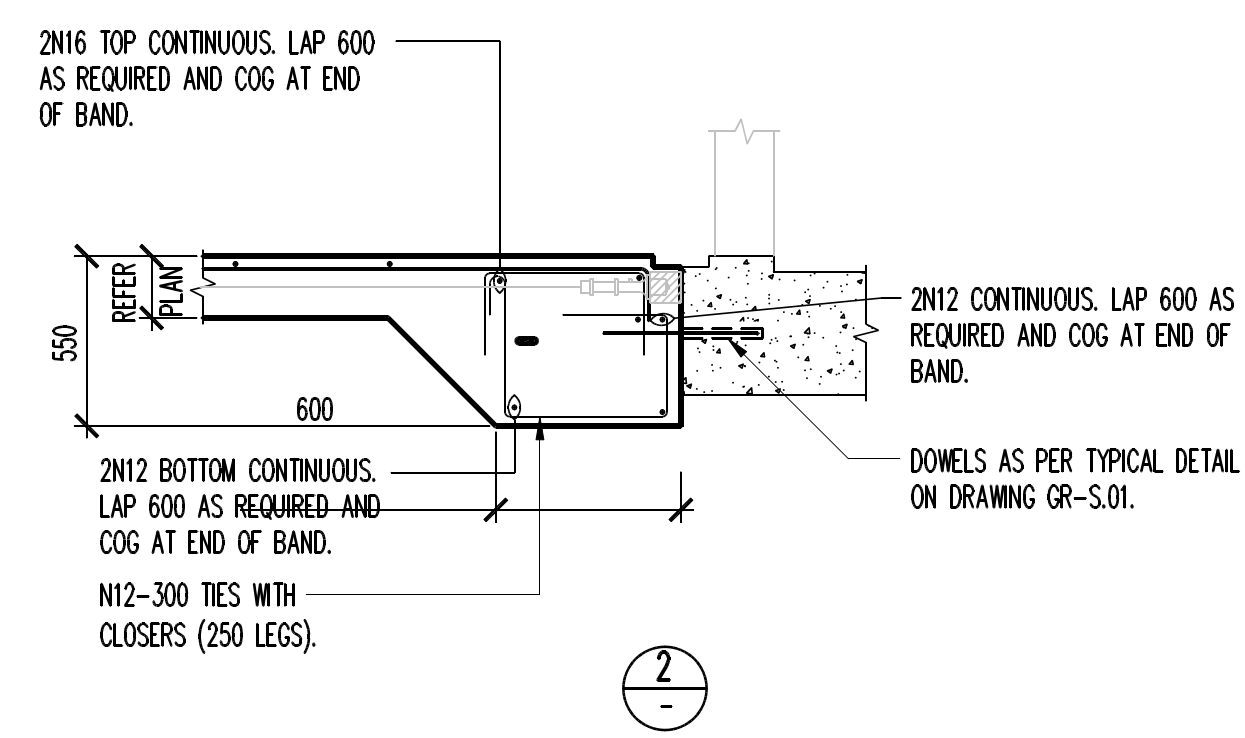
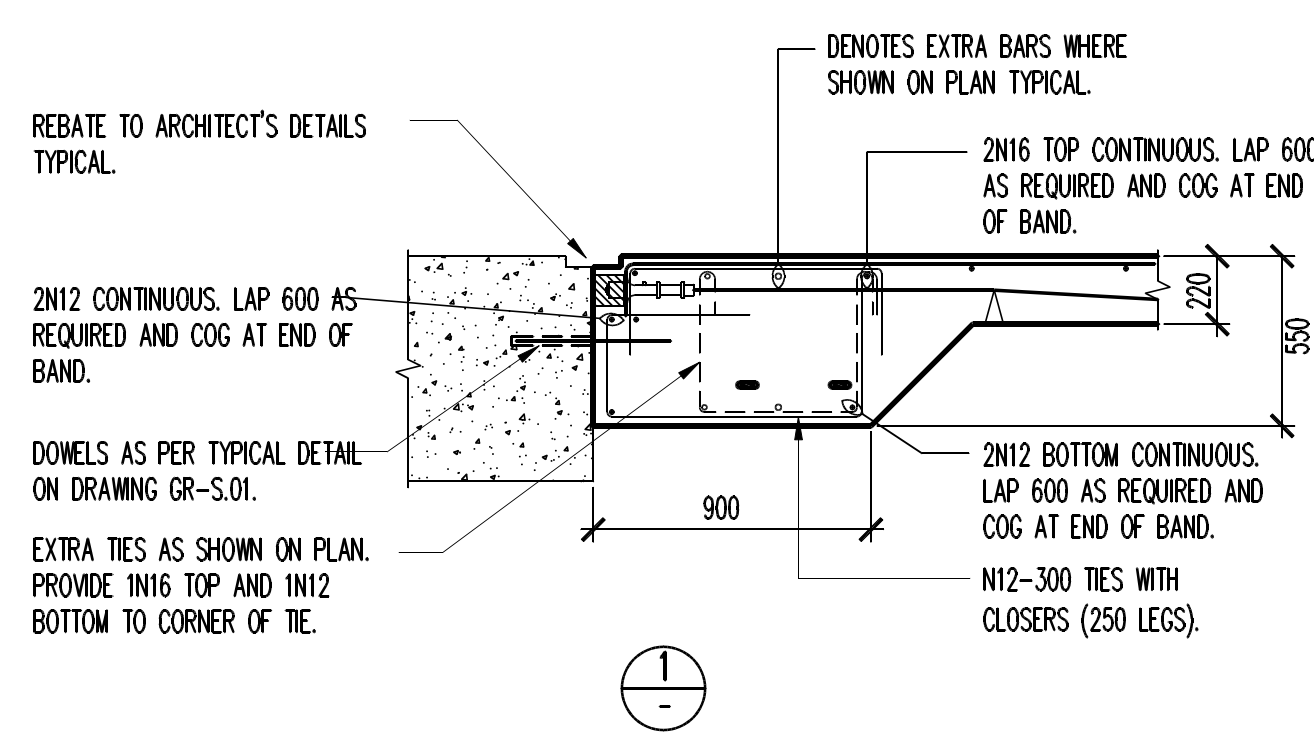


PLAN - GROUND FLOOR SLAB 27

200 THICK SLAB U.N.O.
 GENERAL ARRANGEMENT AND REINFORCEMENT
 REFER DWG. NO. GR-27.02 FOR PRESSURING DETAILS.
 SLAB AND SLAB BAND THICKNESSES SHOWN ON PLAN ARE CONSTANT.
 REFER ARCHITECT'S DRAWINGS FOR SLAB FALLS, REBES, DROP GROOVES AND ALL NON-STRUCTURAL ITEMS.
 F.G. DENOTES 100 RECESS FOR CAST IN FLOOR GRATE. NOT TO BE INCLUDED IN CALCULATION OF FORMWORK LEVELS.



GENERAL NOTES

- DESIGN LOADS**
LIVE LOAD U.N.O.
- CONCRETE** - 6.5kPa
ALL WORKMANSHIP AND MATERIALS SHALL BE IN ACCORDANCE WITH CURRENT EDITIONS OF AS 3600 "CONCRETE STRUCTURES" EXCEPT AS VARIED BY THE CONTRACT DOCUMENTS. FOR ALL RELEVANT CONSTRUCTION NOTES REFER CN-01. CONCRETE COMPONENTS AND QUALITY SHALL BE AS FOLLOWS:-

28 DAY COMPRESSIVE STRENGTH:	
COMPONENT	STRENGTH
SLAB AND BEAMS	S32
56 DAY DRYING SHRINKAGE	650 μ
MAX. AGG. SIZE	20mm
SLUMP	80 ± 15mm
CEMENT TYPE	GP
ADMIXTURES	NIL
CONTROL TESTING TYPE	PROJECT TO AS 1379 CLAUSE 6.5

- FIRE RESISTANCE RATING**
3 HOURS
- REINFORCEMENT COVER**
THE CLEAR CONCRETE COVER TO REINFORCEMENT SHALL BE AS FOLLOWS:-

COMPONENT	COVER (mm) U.N.O.
SLABS	30mm BOTTOM
	20mm TOP INTERNAL
	40mm TOP EXTERNAL
BEAMS	30mm BOTTOM
	40mm TOP
	40mm SIDE

- REINFORCEMENT BAR LAPS**
UNO BAR LAPS (mm) SHALL BE AS FOLLOWS

BAR SIZE	BAR LAPS FOR BEAMS AND SLABS	
	TOP BAR	BOTTOM BAR
N12	500	500
N16	800	650
N20	1150	900
N24	1300	1050
N28	1600	1300
N32	2000	1600
N36	2450	1950

NOTE: A TOP BAR HAS 300mm OR MORE CONCRETE UNDER THE BAR.
 MINIMUM LAP FOR ALL FABRIC SHALL BE ONE MESH PLUS 30mm.

- REINFORCEMENT SCHEDULE**

MARK	REINFORCEMENT
T	TOP REINFORCEMENT
B	BOTTOM REINFORCEMENT
E	EXTRA REINFORCEMENT
A	N12-300 TIES IN PAIRS
C	N12-300 TIES
D	N12-150 TIES IN PAIRS

- PENETRATIONS**
ALL PENETRATIONS TO BE REFERRED TO MPN FOR REVIEW.

NO PENETRATIONS THROUGH BAND BEAMS OR ADJACENT COLUMNS WITHOUT APPROVAL BY MPN.

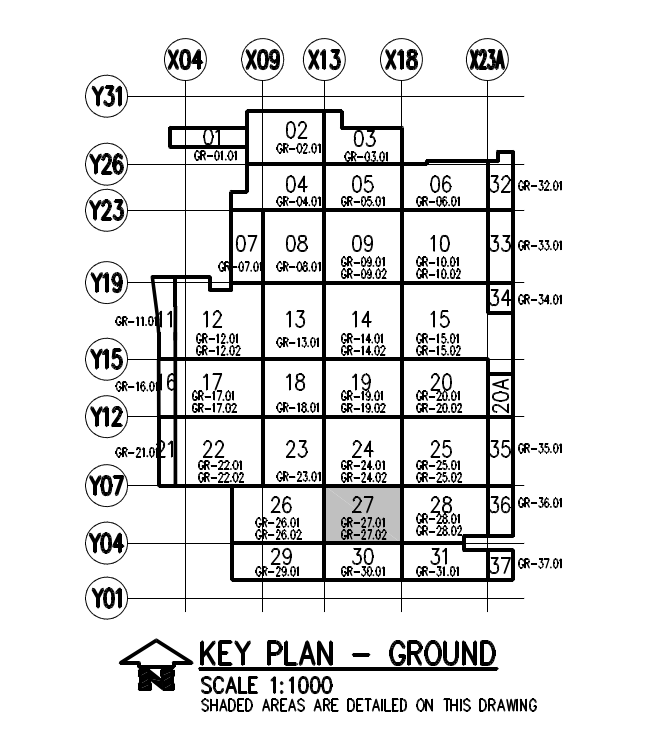
- CONCRETE CURING**
ADEQUATE MEASURES TO CONTROL DRYING SHRINKAGE OF CONCRETE SHALL BE USED. IN PARTICULAR:
 - HOT WEATHER CONCRETING PRACTICES TO BE USED IF NECESSARY (E.G. SHIELDING FROM WIND, TEMPERATURE CONTROL OF CONCRETE).
 - NO WATER TO BE ADDED TO MIX ON SITE.
 - USE OF ALIPHATIC ALCOHOL AS SOON AS SCREEDING IS FINISHED.
 - ADEQUATE CURING OF SLABS USING AN APPROVED CURING COMPOUND, BLACK PLASTIC, WATER SPRAYS OR PONDING.
 - REFER ALSO TO MPN SPECIFICATION.

CURING IS TO COMMENCE IMMEDIATELY AFTER FINAL FINISH HAS OCCURRED.
 CONCRETE PLACEMENT AND CURING PROCEDURES ARE TO BE SUBMITTED TO THE ENGINEER FOR APPROVAL PRIOR TO CONSTRUCTION.

NORTH

REVISION	DESCRIPTION	DATE	CHECKED

DESIGNER: [] CHECKED: [] APPROVED: []
 COPYRIGHT: THIS DESIGN AND PLAN ARE NOT TO BE REPRODUCED OR TRANSMITTED IN ANY FORM OR BY ANY MEANS, ELECTRONIC OR MECHANICAL, WITHOUT THE WRITTEN PERMISSION OF THE ENGINEER.

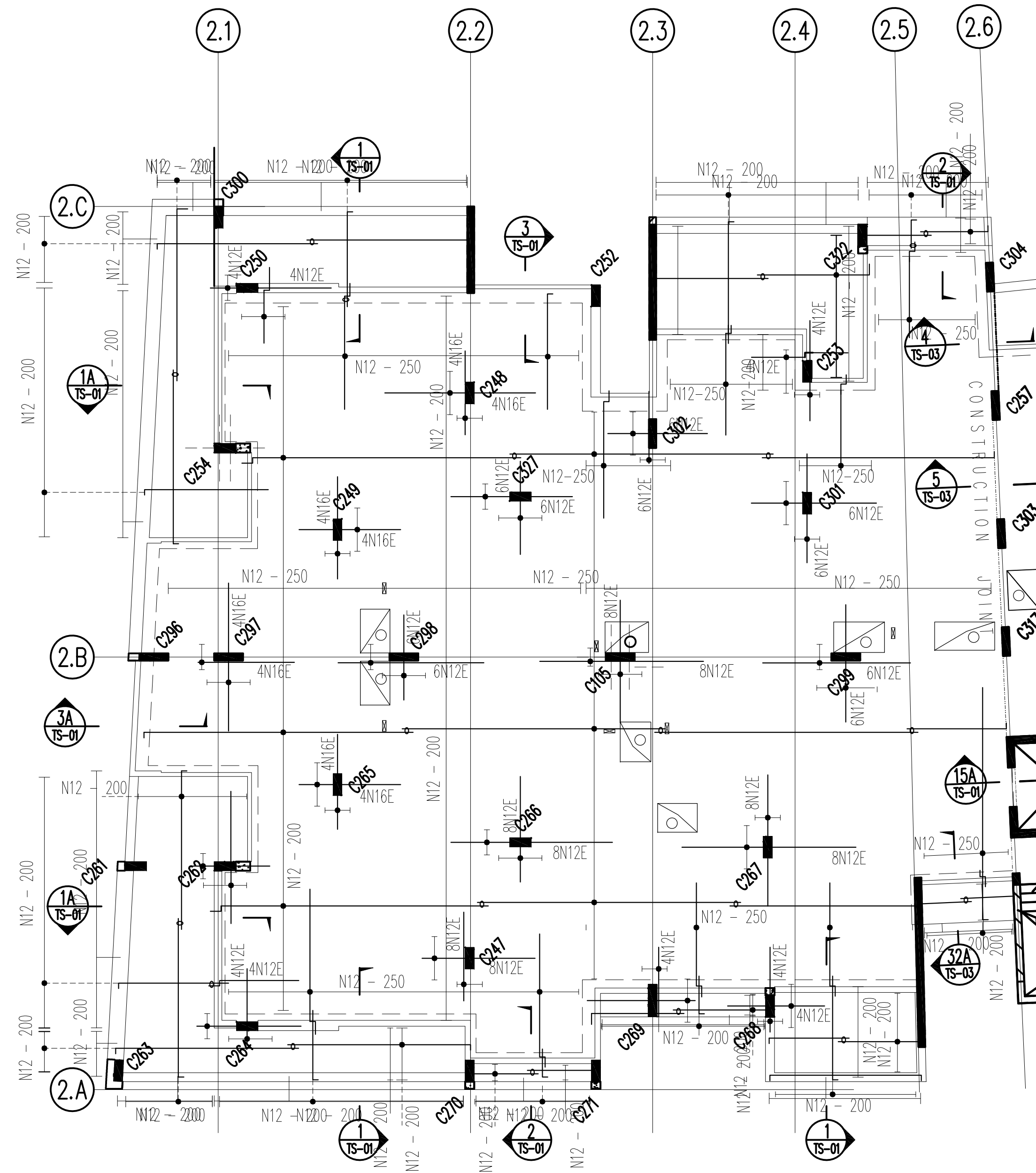


Level 2
 144 Grey Street
 South Brisbane QLD 4101
 Telephone 07 3859 5888
 Facsimile 07 3010 1000

110 WALKER STREET
 NORTH SYDNEY 2060
 T (02) 9666 2066
 F (02) 9669 2016
 E info@condonadrey.com.au
 A/C/O: []

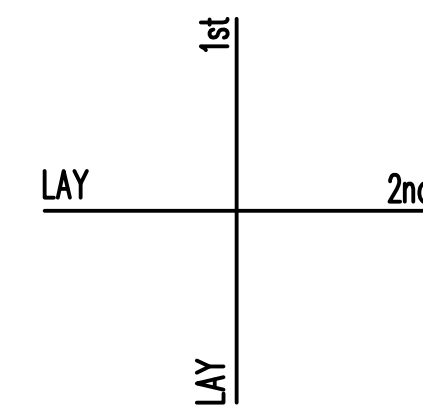
TOWN CENTRE DEVELOPMENT
 CENTENARY HIGHWAY
 SPRINGFIELD

Level 2
 28 Blenheim Road
 Toowoomba Qld 4300
 Phone: 07 3371 8877
 Fax: 07 3371 3190
 Email: dra@engr.com.au

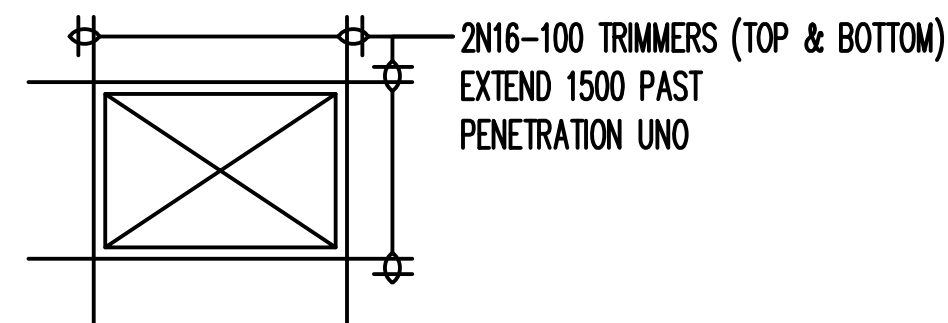


PLAN - LEVEL 3 TOP REINFORCEMENT

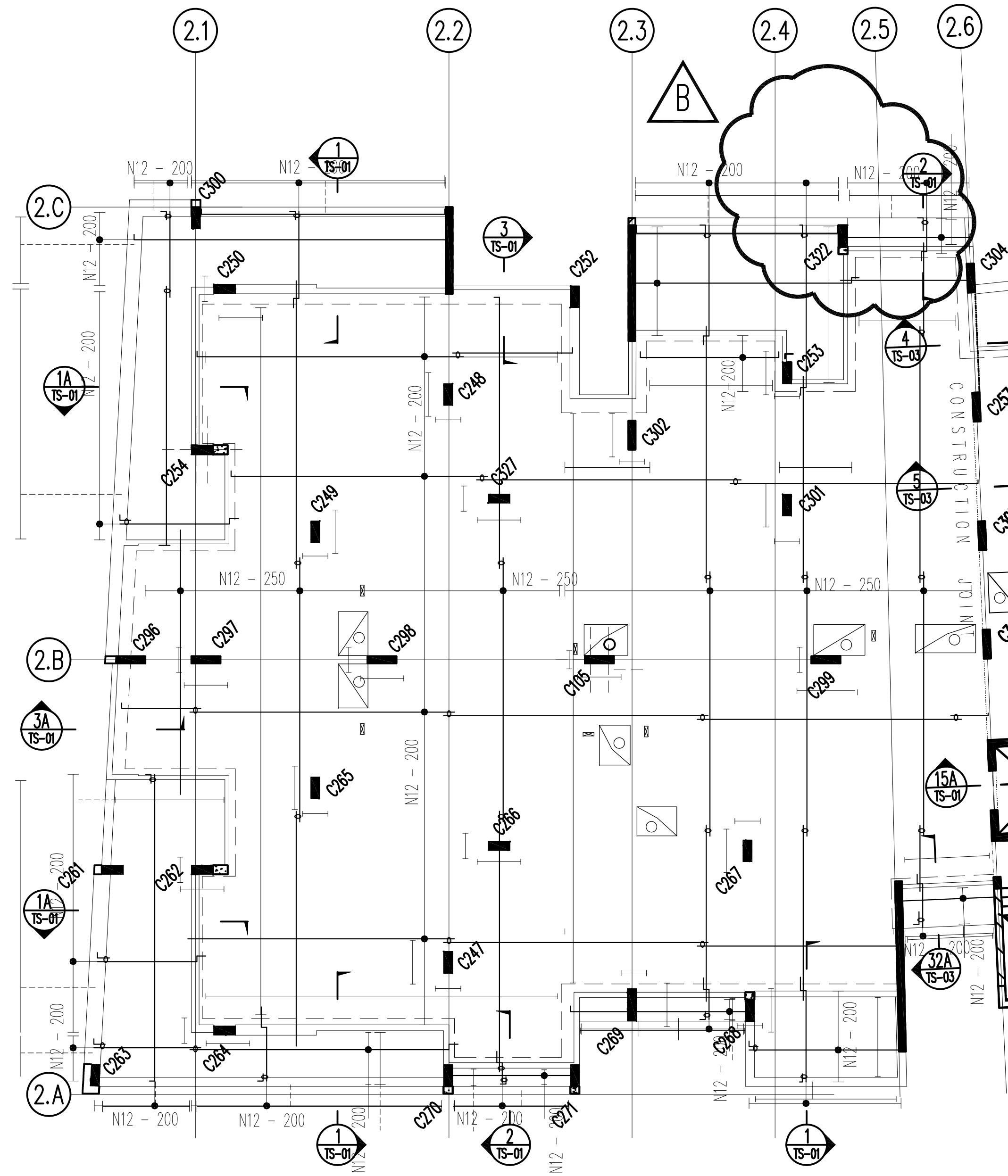
REFER DRAWING B2-L4-01 FOR GENERAL ARRANGEMENT
E - DENOTES EXTRA BARS



BAR LAYING SEQUENCE
DISTRIBUTION BARS TO BE N12-300

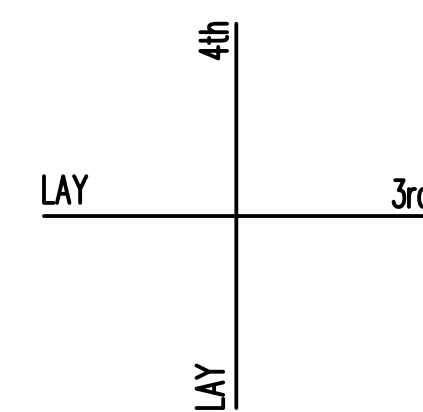


TYPICAL PENETRATION DETAIL

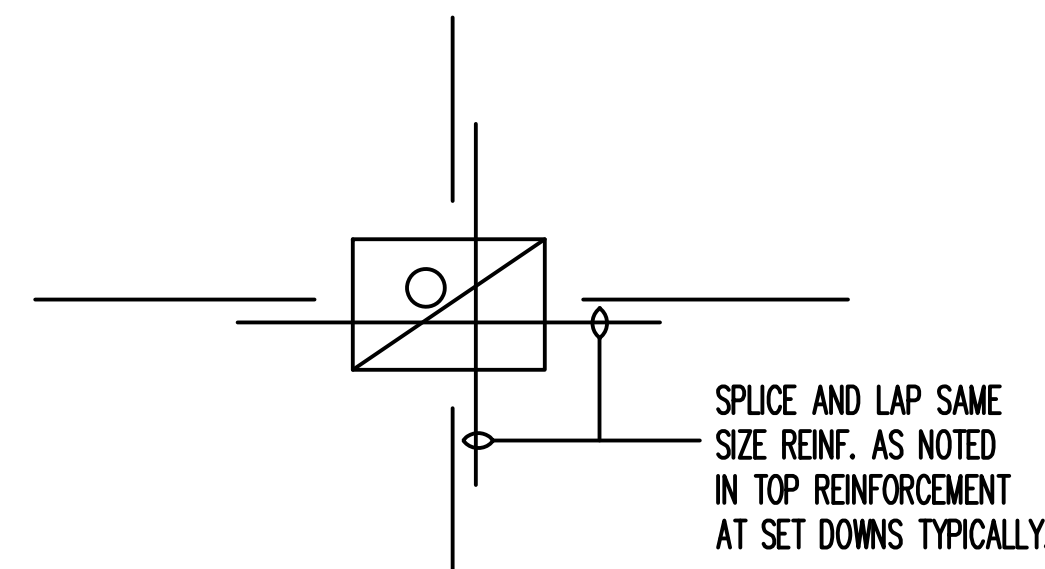


PLAN - LEVEL 4 BOTTOM REINFORCEMENT

REFER DRAWING B2-L4-01 FOR GENERAL ARRANGEMENT



BAR LAYING SEQUENCE
DISTRIBUTION BARS TO BE N12-300



TYPICAL SHOWER SET DOWN.
N.T.S.

NOTES

1. CONCRETE
ALL WORKMANSHIP AND MATERIALS SHALL BE IN ACCORDANCE WITH CURRENT EDITIONS OF AS 3600 "CONCRETE STRUCTURES" EXCEPT AS VARIED BY THE CONTRACT DOCUMENTS. FOR ALL RELEVANT CONSTRUCTION NOTES REFER CONCRETE COMPONENTS AND QUALITY SHALL BE AS FOLLOWS:-

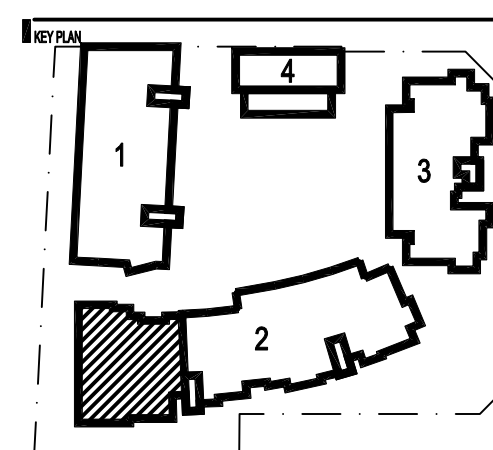
2. REINFORCEMENT COVER
THE CLEAR CONCRETE COVER TO REINFORCEMENT SHALL BE AS FOLLOWS:-

COMPONENT	COVER (mm)	U.N.O.
SLABS	20mm	BOTTOM
	20mm	TOP INTERNAL
	40mm	TOP EXTERNAL
BEAMS	40mm	BOTTOM
	40mm	TOP
	40mm	SIDE

3. REINFORCEMENT BAR LAPS
UNO BAR LAPS (mm) SHALL BE AS FOLLOWS

BAR SIZE	BAR LAPS FOR BEAMS AND SLABS	
	TOP BAR	BOTTOM BAR
N12	500	500
N16	800	650
N20	1150	900
N24	1300	1050
N28	1600	1300
N32	2000	1600
N36	2450	1950

NOTE: A TOP BAR HAS 300mm OR MORE CONCRETE UNDER THE BAR.
MINIMUM LAP FOR ALL FABRIC SHALL BE ONE MESH PLUS 30mm.



REV	DATE	AMENDMENTS	REV	DATE	AMENDMENTS	REV	DATE	AMENDMENTS

PROJECT _____ **DATE FIRST CREATED** 05.03.04

PRINCIPAL _____ **REVISION** B

DESIGN AND CONSTRUCT CONTRACTOR _____

SCALE 1:100 @ A1

PROJECT NO B2-L4-02

STRUCTURAL & CIVIL ENGINEERS

400 BAYLEY ST
38 BIRWOOD ROAD TORONTO ONT. M5S 1B7
TEL: (416) 597-8822 FAX: (416) 597-2198

COPYRIGHT ALL RIGHTS RESERVED. THIS WORK IS COPYRIGHTED AND CANNOT BE REPRODUCED OR COPIED IN ANY FORM OR BY ANY OTHER MEANS GRAPHIC, ELECTRONIC OR MECHANICAL INCLUDING PHOTOCOPYING, RECORDING, THE INFORMATION STORAGE AND RETRIEVAL SYSTEMS, OR BY ANY INFORMATION STORAGE AND RETRIEVAL SYSTEM. FOR ANY SPATIAL INFORMATION OR DATA REFER TO THE ORIGINAL OR A MORE RECENT VERSION OF THIS DOCUMENT. FOR ANY SPATIAL INFORMATION OR DATA REFER TO THE ORIGINAL OR A MORE RECENT VERSION OF THIS DOCUMENT.